

ALTERNATIVE PROVISION

at the outdoor learning company



1 OUR ALTERNATIVE PROVISION

Alternative Provision

Our Alternative Provision offers a nurturing, creative and nature-rich learning experience for children aged 5–13 (School years 1-8) who are unable to attend mainstream school full time or who would benefit from a flexi-schooling arrangement. While the child's registered school retains overall responsibility for their education, our sessions provide a powerful complement—delivering unique opportunities for growth, confidence and connection.

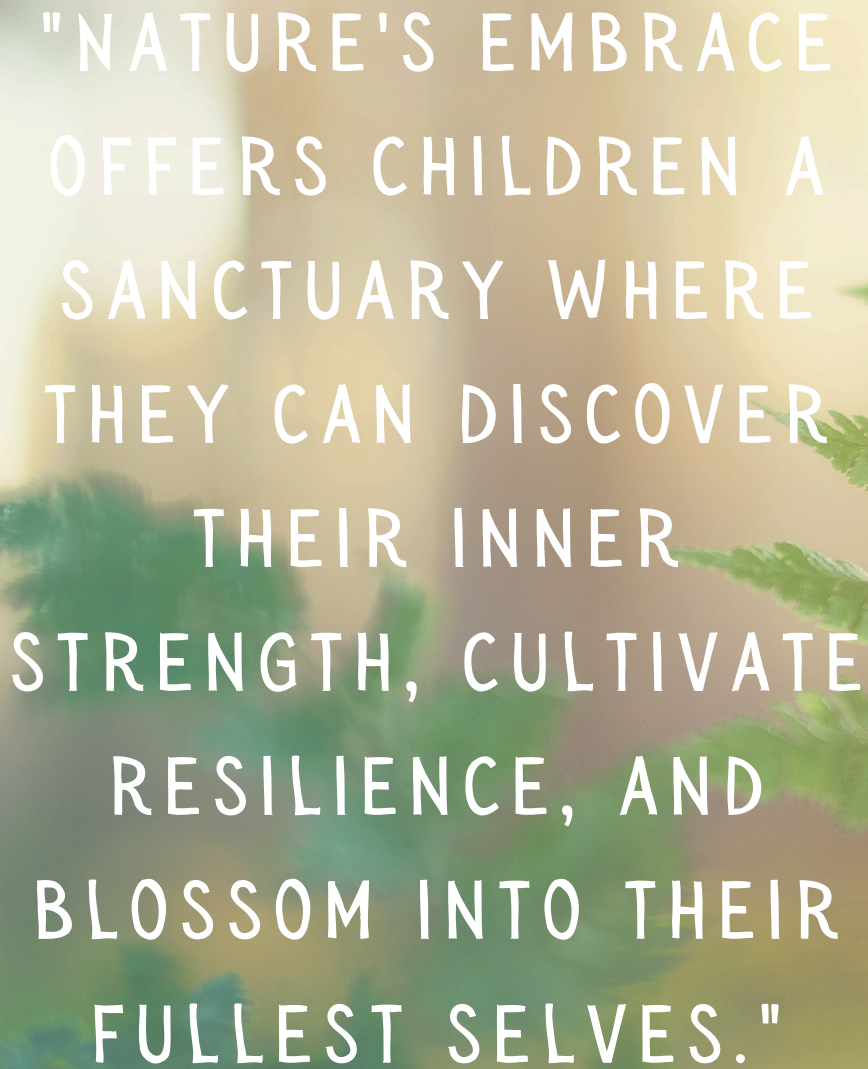
Children can attend both Forest School and Embers Project Hub, or choose the session that best suit their needs and interests:

Forest School – Immersive, child-led learning held outdoors all year round, in all weather, where nature is both classroom and teacher. Sessions evolve naturally around children's interests, fostering curiosity, independence, appropriate risk-taking and emotional resilience. Qualified practitioners act as gentle guides, creating space for exploration and helping each child build practical skills and a deep connection to the natural world.

Embers Project Hub – A warm, welcoming environment that is predominantly indoors with access to outdoor spaces, where children feel valued, have fun and develop the confidence to become resilient, lifelong learners. Through hands-on projects, intentional play and time in nature, children build skills, friendships and meaningful memories. Curriculum areas emerge naturally within authentic, cross-curricular experiences, guided by caring adults and supportive peers. Each term ends with a celebratory Sharing Day, where children take the lead in showcasing their learning.

Together, these experiences offer a joyful, whole-child approach that nurtures curiosity, creativity and wellbeing, complementing the education provided at home and in school. Every child's unique path is supported and celebrated, laying the foundations for confident, capable learners ready for the future.





"NATURE'S EMBRACE
OFFERS CHILDREN A
SANCTUARY WHERE
THEY CAN DISCOVER
THEIR INNER
STRENGTH, CULTIVATE
RESILIENCE, AND
BLOSSOM INTO THEIR
FULLEST SELVES."

RACHEL CARSON

2 OUR SESSIONS

Our **Forest School** sessions run Tuesdays from **12.30 to 15:30** during term time at East Close Farm.

We start each day with registration at 12.30, then make our way to the woodland base. Here, we gather around the fire circle to check in with each other, share news from the past week, and make plans for the day.

The woodland environment is set up for children to explore and play freely, following their own interests at their own pace. Daily activities include using tools, climbing trees, getting creative, studying nature, building dens, participating in group games, and going on planned adventures.

Being in nature, connected with the changing seasons under the trees, offers a special way for children to spend their days. The opportunity to make friends and see each other weekly creates a strong sense of belonging.

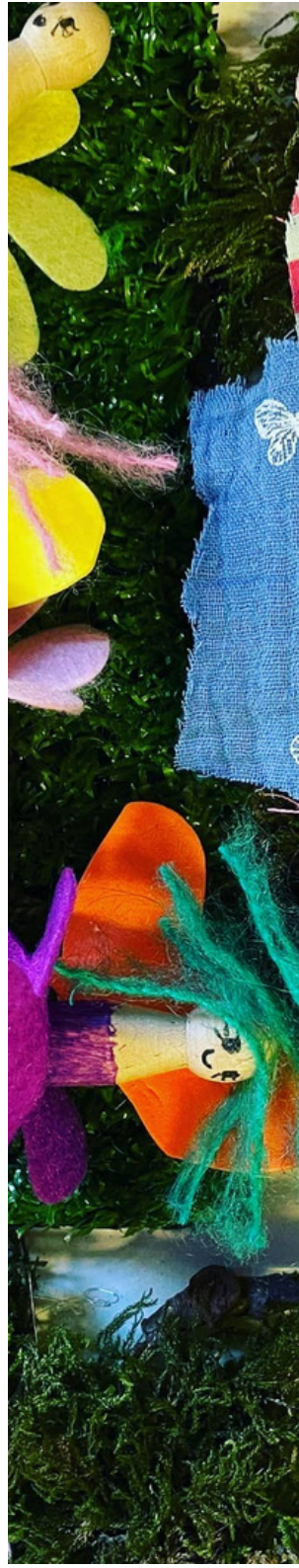
Each session is unique, adapting to the time of year, weather conditions, and the children's engagement. Our sessions are child-led, and our wonderful leaders bring their own interests, knowledge, and ideas to each day.

Our **Embers Project Hub** sessions run from **10:00 to 15:00** during term time at Bransgore Scout Hut.

We start each day with arrival at 10:00, giving children time to settle in and begin exploring. We then gather for Morning Circle to share news, plan the day, and enjoy a snack.

The space is set up for children to engage in hands-on projects, creative activities, play, and workshops, both indoors and outdoors. Daily activities are guided by the children's interests, allowing them to explore at their own pace. Activities might include art, building, cooking, science experiments, storytelling, and collaborative games.

The supportive, welcoming environment helps children make friends, build confidence, and feel a sense of belonging. Each session is unique, adapting to the season, the children's ideas, and group dynamics. Our skilled facilitators bring their own knowledge, creativity, and experience to enhance each day while keeping it child-led and fun.




4 ADVENTURE & LEARNING JOURNALS

At The Outdoor Learning Company, we use Tapestry for recording Children's adventures. Although this is essentially a tool for the early years, we feel we can adapt this for our older children. You will be able to keep track of what the children are up to during their time with us. We can take photos and add comments that will be uploaded to their journals.

The parents/carers/schools will receive an email every time an observation has been uploaded and will be able to track their time with us.



A close-up photograph of a child's hands working with brown clay on a wooden table. The table is covered in colorful paint splatters and has several wooden sculpting tools scattered on it. The child is wearing a colorful, abstract-patterned t-shirt. The text is overlaid in the center of the image.

"CHILDREN ARE BORN WITH
ALL THE WONDER THEY
WILL NEED.
OUR JOB IS NOT TO TAKE
IT AWAY."

AINSLEY ARMENT

5 WORLD READY

Our aim at The Outdoor Learning Company is to have children leave us with a thirst for learning, exploration and investigation.

The self confidence to ask questions and challenge ideas.

The social skills to make friends, work in groups and treat each other with respect.

The problem-solving skills needed to help with different challenges that lay ahead.

The self-regulation to control their own behaviour.

The understanding of their own emotions and those that others may experience and a physical durability for any challenges that lay ahead.



7 FEES

Academic year 25/26

Forest School: £60 per session
Embers £110 per session

Invoices are sent out half termly and we will require a 4 week notice period should you wish to terminate a placement.



We are an Ofsted-registered setting, ensuring that all staff have enhanced DBS checks and that robust policies are in place to run sessions safely and smoothly.

Embers is led by qualified teachers, while Forest School is led by Level 3 Forest School practitioners. All session leaders are first-aid trained, and our services are fully insured, providing a safe and professional environment for every child.

7 LOCATIONS


Forest School – East Close Farm, Hinton Admiral Estate

Our Forest School takes place on the beautiful Hinton Admiral Estate, on the edge of the New Forest. The site includes a large barn, a 2-acre woodland base camp, a private lake, and 20 acres of woodland to explore.

Embers Project Hub – Bransgore Scout Hut, Bransgore

Embers Bransgore sits on 2 acres of private land with a large indoor learning space, kitchen, private woodland, and direct access to the New Forest National Park. The site is easily accessible from Bournemouth, Christchurch, Wimborne, Ferndown, Ringwood and the New Forest.

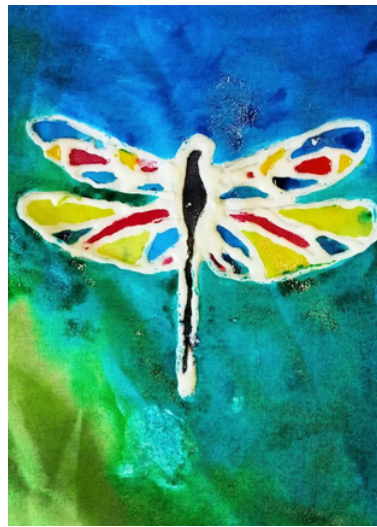


A close-up photograph of a hand with red-painted nails holding a wooden-handled paintbrush. The brush is positioned over a metal palette that contains several wells of paint in various colors, including blue, green, and yellow. The background is blurred, showing more paint and a soft, warm light. The text is overlaid in the center of the image.

"CHILDREN ARE NOT THINGS
TO BE MOULDED, BUT
PEOPLE TO BE UNFOLDED."

JESS LAIR





9 REGISTRATION

If you're interested in joining our Alternative Provision, please email us at **admin@theoutdoorlearningcompany.co.uk** to start the process. We will then hold an initial consultation, often over the phone to make sure we are the right setting for your child.

We welcome diversity and strive to support all children who wish to attend our sessions. While we aim to make adjustments whenever possible, our session leaders reserve the right to refuse a space if they feel they cannot adequately meet a child's needs.

Once a place is offered, a registration fee of £50 will be required to secure it. A 4-week trial period will follow. If everyone – the child, parents/carers, school, and session leaders – are happy with the trial, we will set up a payment schedule. If you wish to leave, we require 4 weeks' notice. Our session practitioners are available for feedback at drop-off or pick-up each week.

If you have any questions, please don't hesitate to get in touch.





"IF WE WANT OUR
CHILDREN TO MOVE
MOUNTAINS, WE
FIRST HAVE TO LET
THEM GET OUT OF
THEIR CHAIRS."

NICOLETTE SOWDER



WWW.THEOUTDOORLEARNINGCOMPANY.CO.UK