

OUTDOOR ADVENTURERS

A FOREST SCHOOL GROUP FOR
HOME EDUCATING CHILDREN



1 WHAT IS FOREST SCHOOL?

THE ETHOS OF FOREST SCHOOL IS BASED ON A FUNDAMENTAL RESPECT FOR CHILDREN AND YOUNG PEOPLE AND FOR THEIR CAPACITY TO INSTIGATE, TEST AND MAINTAIN CURIOSITY IN THE WORLD AROUND THEM. IT BELIEVES IN CHILDREN'S RIGHT TO PLAY; THE RIGHT TO ACCESS THE OUTDOORS (AND IN PARTICULAR A WOODLAND ENVIRONMENT); THE RIGHT TO ACCESS RISK AND THE VIBRANT REALITY OF THE NATURAL WORLD; AND THE RIGHT TO EXPERIENCE A HEALTHY RANGE OF EMOTIONS, THROUGH ALL THE CHALLENGES OF SOCIAL INTERACTION, TO BUILD A RESILIENCE THAT WILL ENABLE CONTINUED AND CREATIVE ENGAGEMENT WITH THEIR PEERS AND THEIR POTENTIAL.

FOREST SCHOOL IS BASED MORE ON THE PROCESS OF LEARNING THAN IT IS ON THE CONTENT - MORE ON THE 'HOW' THAN THE 'WHAT'. THIS MEANS THAT GENUINE FOREST SCHOOL PRACTICE STEPS BOLDLY OUT OF THE SHADOW AND LIMITATION OF 'PLANNED ACTIVITIES' AND VENTURES COLLABORATIVELY INTO THE REALMS OF THE UNPLANNED, UNEXPECTED AND ULTIMATELY UNLIMITED.

CHILDREN AND YOUNG PEOPLE ARE GIVEN ENCOURAGEMENT TO DIRECT THEIR OWN LEARNING - THIS OFTEN REQUIRES CATALYSING ON THE PART OF THE FOREST SCHOOL LEADER EITHER THROUGH STIMULATING PLAY IN THE OUTDOORS OR THROUGH 'SCAFFOLDING' A CHILD'S LEARNING, BUT MOSTLY THROUGH SIMPLY OBSERVING HOW CHILDREN ARE IN THE OUTDOORS.

SIGNIFICANTLY, AND ON MANY LEVELS, A WOODLAND ENVIRONMENT IS CENTRAL IN SUPPORTING THIS VERY DYNAMIC APPROACH TO LEARNING: THE PASSAGE OF TIME, FROM THE CHANGING OF THE SEASONS, TO THE CONTEMPLATION OF AN ANCIENT TREE; THE DYNAMIC NATURE OF AN OUTDOOR ENVIRONMENT - AN INFINITE SOURCE OF SMELLS, TEXTURES, SOUNDS AND TASTES; A RANGE OF VISUAL STIMULI FROM NEAR TO FAR, HIGH TO LOW, VERY BIG TO VERY SMALL; AND THE INFINITE LAYERS OF HISTORICAL, CULTURAL, SPIRITUAL AND MYTHOLOGICAL SIGNIFICANCE THAT SPEAK OF OUR DEEP RELATIONSHIP WITH TREES AND WOODLAND THROUGH THE AGES.*

*THE INFORMATION ON THIS PAGE IS TAKEN FROM THE FOREST SCHOOL TRAINING COMPANY WEBSITE





"TO WALK IN NATURE
IS TO WITNESS A
THOUSAND MIRACLES"

MARIE DAVIS

2 OUR SESSIONS

THE POPULAR OUTDOOR ADVENTURERS HOME ED DAYS RUN 5 DAYS A WEEK FROM THE HINTON ADMIRAL ESTATE WHERE CHILDREN WILL BE ABLE TO ENGAGE WITH NATURE OVER ACRES OF PRIVATE WOODLAND. AND MONDAYS AND WEDNESDAYS FORM THE CRICKET CAMP, RIVER HAMBLE COUNTRY PARK, SOUTHAMPTON WHERE CHILDREN CAN EXPLORE NOT ONLY THE BASE CAMP BUT THE BEAUTIFUL COUNTRY PARK AND RIVER.

OUTDOOR ADVENTURERS HOME ED SESSIONS ARE SOLELY FOR ELECTIVE HOME EDUCATED CHILDREN AGED 5-11 YEARS OLD AND THE RESPONSIBILITY OF THE CHILD'S EDUCATION REMAINS WITH THE PARENTS/CARERS.

DURING YOUR CHILD'S TIME WITH US THEY WILL BE INTRODUCED TO A RANGE OF BUSH CRAFT TOOLS INCLUDING KNIVES, SAWS, AND DRILLS TO NAME A FEW. OUR TOOL WORK AREA ALLOWS FOR CHILDREN TO DEVELOP THEIR OWN CREATIONS TO THE SPECIFICATIONS THEY SEE FIT.

THE FIRE CIRCLE IS THE HEART BEAT OF OUR WOODLAND. WE GATHER ROUND THE CIRCLE TO CHECK IN, THIS IS A CHANCE TO SHARE NEWS, STORIES OR ITEMS AND SEE WHAT IS NEW WITHIN THE WOODLAND. AT THE END OF THE SESSION ITS A PLACE FOR REFLECTION, A CHANCE FOR CHILDREN TO SAY WHAT THEY HAVE ENJOYED THAT DAY AND WHAT THEY MIGHT LIKE TO DO THE FOLLOWING WEEK. OF COURSE THE FIRE CIRCLE IS WHERE WE COOK A RANGE OF FOODS AS WELL, SUCH AS PIZZA, SOUP, NETTLE TEA AND OF COURSE MARSHMALLOWS. OUR CHILDREN ARE ABLE TO EXPLORE DIFFERENT FIRE LIGHTING TECHNIQUES AND LEARN HOW TO BUILD DIFFERENT TYPES OF CAMP FIRES.

WE LOVE OUR EXPLORATIONS AND BEING BLESSED WITH SO MUCH WOODLAND AND VARYING TYPES OF ENVIRONMENTS WE ARE NEVER SHORT OF SOMEWHERE NEW TO EXPLORE. WE OFTEN GO ON MANY WALKS FOR MANY DIFFERENT REASONS, WHETHER IT BE ON A POO HUNT OR TO FIND THE FIRST SIGNS OF SPRING, OUR ADVENTURES ARE NOT RESTRICTED TO ONE SMALL BASE.

NO FOREST SCHOOL IS COMPLETE WITHOUT A MUD KITCHEN, AND OURS COMES FULLY EQUIPPED. LOTS OF POTS AND PANS TO MAKE A RANGE OF CREATIONS FROM MUD PIES TO THE LATEST MAGICAL POTION.

CLIMBING IS SOMETHING WE NOT ONLY ALLOW BUT ENCOURAGE. THE OPPORTUNITIES WE HAVE FOR THIS ARE ENDLESS. WE HAVE A NUMBER OF TREES AND LOGS THAT THE CHILDREN CAN CLAMBER OVER AND CLIMB UP. WE ALSO HAVE PLENTY OF ROPE SWINGS AND A ZIPWIRE THAT GOES ACROSS THE STREAM. ALL OF THESE AREAS HELP FOR A HEALTHY STRONG CHILD.

WE UNDERSTAND THAT THERE ARE SOME DAYS THAT WILL BE SO WET OR SO COLD, THAT SOME CHILDREN WILL WANT A BREAK FROM THEIR ADVENTURES, WE DO HAVE A PARACHUTE, SHELTERS AND BARN OR HALL WE CAN RETREAT TO IF THE WEATHER IS SEVERE, DEPENDING ON LOCATION. AT BOTH SITES, WE ARE LUCKY ENOUGH TO HAVE ACCESS TO A LARGE WATER SOURCE, A LARGE LAKE AT HINTON AND THE RIVER HAMBLE AT HAMBLE, ALLOWING US PLENTY OF OPPORTUNITY FOR POND DIPPING, DISCOVERING DIFFERENT PLANTS, FINDING FROGS AND NEWTS, CRABBING, CATCHING BUTTERFLIES AND DRAGONFLIES AND MORE. SOMETIMES WE TAKE THE OPPORTUNITY TO SIT STILL AND JUST OBSERVE.



3 AN OUTDOOR ADVENTURER'S DAY

THE DAY RUNS BETWEEN 10AM AND 3.30PM, TERM TIME.

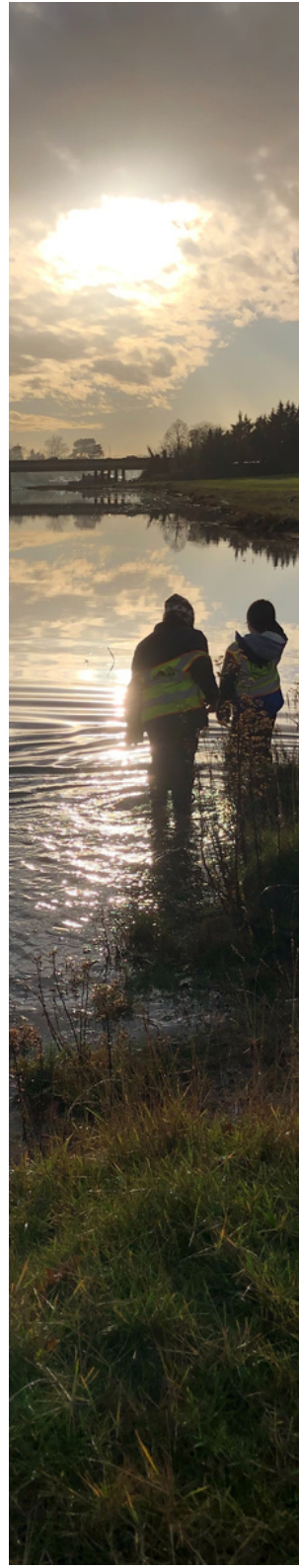
WE MEET FOR REGISTRATION AT 10AM AND MAKE OUR WAY TO THE WOODLAND BASE WHERE WE GATHER AROUND THE FIRE CIRCLE TO CHECK IN WITH HOW EACH OTHER ARE FEELING, SHARE NEWS FROM THE WEEK GONE BY AND MAKE PLANS FOR THE DAY.

THE WOODLAND ENVIRONMENT IS SET UP TO ALLOW THE CHILDREN TO EXPLORE AND PLAY FREELY THROUGHOUT THE SESSIONS, FOLLOWING THEIR OWN INTERESTS AT THEIR OWN PACE. OPPORTUNITIES FOR CHILDREN TO USE THE TOOLS, CLIMB TREES, GET CREATIVE, STUDY NATURE, BUILD DENS, TAKE PART IN GROUP GAMES AND PLANNED ADVENTURES ARE ON OFFER DAILY.

THE GROUP COME TOGETHER FOR LUNCH WHICH THEY BRING FROM HOME AND ACTIVITIES ON AND OFF THROUGH THE DAY DEPENDING ON WHAT THE SESSION LEADERS AND CHILDREN HAVE PLANNED.

BEING IN NATURE, CONNECTED WITH THE CHANGING SEASONS UNDER THE TREES IS SUCH A SPECIAL WAY FOR THE CHILDREN TO SPEND THEIR DAYS. OPPORTUNITIES TO MAKE FRIENDS AND SEE EACH OTHER EACH WEEK, YEAR AFTER YEAR CREATES A STRONG SENSE OF BELONGING

EACH SESSION IS UNIQUE AND MAY CHANGE ACCORDING TO THE TIME OF YEAR, WEATHER CONDITIONS AND THE CHILDREN'S ENGAGEMENT IN THEIR PLAY AND EXPLORATION. OUR SESSIONS ARE CHILD LED AND OUR WONDERFUL LEADERS EACH BRING THEIR OWN INTERESTS, KNOWLEDGE AND IDEAS TO THE SESSION.




4 ADVENTURE JOURNALS

AT THE OUTDOOR LEARNING COMPANY, WE USE TAPESTRY FOR RECORDING CHILDREN'S ADVENTURES. ALTHOUGH THIS IS ESSENTIALLY A TOOL FOR THE EARLY YEARS, WE FEEL WE CAN ADAPT THIS FOR OUR OLDER CHILDREN. YOU WILL BE ABLE TO KEEP TRACK OF WHAT THE CHILDREN ARE UP TO DURING THEIR TIME WITH US. WE CAN TAKE PHOTOS AND ADD COMMENTS THAT WILL BE UPLOADED TO THEIR JOURNALS.

AS PARENTS/CARERS YOU WILL RECEIVE AN EMAIL EVERY TIME AN OBSERVATION HAS BEEN UPLOADED AND YOU WILL BE ABLE TO TRACK THEIR TIME WITH US. YOU MAY EVEN WANT TO UPLOAD YOUR OWN OBSERVATIONS ON YOUR CHILD RELATING TO FOREST SCHOOL ACTIVITIES.





"TO RAISE A
NATURE-BONDED CHILD IS
TO RAISE A REBEL,
A DREAMER, AN INNOVATOR,
SOMEONE WHO WILL WALK
THEIR OWN VERDANT,
WINDING PATH."

NICOLETTE SOWDER

5 WORLD READY

OUR AIM AT OUTDOOR ADVENTURERS IS TO HAVE CHILDREN LEAVE US WITH A THIRST FOR LEARNING, EXPLORATION AND INVESTIGATION.

THE SELF CONFIDENCE TO ASK QUESTIONS AND CHALLENGE IDEAS.

THE SOCIAL SKILLS TO MAKE FRIENDS, WORK IN GROUPS AND TREAT EACH OTHER WITH RESPECT.

THE PROBLEM-SOLVING SKILLS NEEDED TO HELP WITH DIFFERENT CHALLENGES THAT LAY AHEAD.

THE SELF-REGULATION TO CONTROL THEIR OWN BEHAVIOUR.

THE UNDERSTANDING OF THEIR OWN EMOTIONS AND THOSE THAT OTHERS MAY EXPERIENCE AND A PHYSICAL DURABILITY FOR ANY CHALLENGES THAT LAY AHEAD.



7 FEES

AS OF SEPTEMBER 2023

REGISTRATION FEE- £40 WHICH SECURES AN OFFERED PLACE AT OUTDOOR ADVENTURERS.

PER SESSION- £30

FEES WILL BE PAID IN 12 MONTHLY INSTALMENTS OF £97.50. THIS IS BASED ON ONE CHILD, ONE DAY A WEEK, STARTING IN SEPTEMBER.

THERE WILL BE A 10% DISCOUNT APPLIED TO ALL SIBLINGS AFTER THE FIRST CHILD.



WE ARE AN OFSTED REGISTERED SETTING, WHICH MEANS ALL OF OUR STAFF UNDERGO ENHANCED DBS CHECKS, HAVE ROBUST POLICIES IN PLACE TO ENSURE SESSIONS RUN SMOOTHLY AND SAFELY AND OUR SESSION LEADERS ARE LEVEL 3 FOREST SCHOOL TRAINED, FIRST AID TRAINED, AND OUR SERVICES FULLY INSURED.

AS WE ARE AN OFSTED REGISTERED SETTING, WE ARE ABLE TO ACCEPT CHILDCARE VOUCHERS. YOU CAN PAY VIA A TAX-FREE CHILDCARE ACCOUNT AND IF YOU ARE IN RECEIPT OF UNIVERSAL CREDIT, YOU MAY BE ABLE TO CLAIM BACK UP TO 80% OF YOUR CHILDCARE EXPENSES.

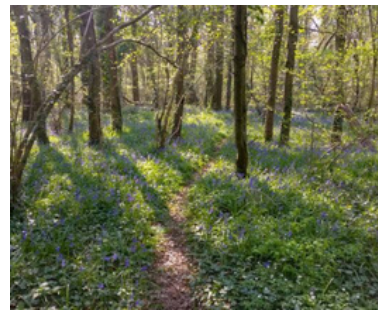


OUTDOOR ADVENTURERS: HINTON ADMIRAL ESTATE

MONDAY, WEDNESDAY, THURSDAY & FRIDAY WE RUN OUTDOOR ADVENTURES FROM THE BEAUTIFUL HINTON ADMIRAL ESTATE, ON THE EDGE OF THE NEW FOREST. EASY REACH FROM LYMINGTON, NEW MILTON, BOURNEMOUTH, FERNDOWN, WIMBORNE, TOTTON, SOUTHAMPTON & LYNTHURST.

WE HAVE A LARGE BARN BASED AT EAST CLOSE FARM, A 2-ACRE WOODLAND BASE CAMP AND ACCESS TO THE PRIVATE ESTATE WHICH INCLUDES A LARGE LAKE AND 20 ACRES OF DIVERSE WOODLAND TO EXPLORE. WE HAVE A LITTLE STREAM RUNNING THROUGH OUR WOODLAND, DEERS PASSING THROUGH AND BUZZARDS SOARING OVER HEAD. WE TAKE REGULAR WALKS TO OUR FOREST SCHOOL ALLOTMENT WHERE WE GROW FRUIT AND VEGGIES AND TAKE CARE OF OUR RESCUE CHICKENS AND DUCKS.

WE HAVE BEEN LUCKY ENOUGH TO BE RUNNING THESE SESSIONS FOR OVER 8 YEARS!



"ROOTS OF UNDERSTANDING
GROW DEEP WHEN CURIOUS
MINDS ARE NOURISHED IN
NATURE."

NELL REGAN K



OUTDOOR ADVENTURES: CRICKET CAMP, RIVER HAMBLE COUNTRY PARK

ON MONDAYS & WEDNESDAYS WE RUN FROM OUR UNIQUE OUTDOOR SETTING ON THE BEAUTIFUL RIVER HAMBLE COUNTRY PARK, EASY REACH FROM SOUTHAMPTON, TOTTEN, PORTSMOUTH, ROMSEY & WINCHESTER.

WE ARE BASED AT THE SCOUT GROUND ALSO KNOWN AS THE CRICKET CAMP WITHIN THE COUNTRY PARK. THERE IS A LARGE AREA WITH A MIX OF OPEN FIELD, BLUEBELL GLADES AND WOODLAND WHERE CHILDREN CAN EXPLORE. IN SEVERE WEATHER WE DO HAVE USE OF THEIR BUILDING AND THE FACILITIES. THERE IS A COVERED VERANDA WHERE WE CAN HAVE LUNCH ON WET DAYS, AND OF COURSE, THERE IS THE ENTIRE BEAUTIFUL RIVER HAMBLE COUNTRY PARK THAT WE CAN GO AND EXPLORE. WE ARE SURE YOUR CHILD'S TIME WITH US WILL BE ENJOYABLE AND INSPIRING.



9 REGISTRATION

IF YOU WOULD LIKE TO JOIN OUTDOOR ADVENTURERS, PLEASE EMAIL
OA@THEOUTDOORLEARNINGCOMPANY.CO.UK TO START THE PROCESS.

WE VALUE DIVERSITY AND AIM TO SUPPORT ALL HOME EDUCATED CHILDREN WHO
WANT TO ATTEND OUR SESSIONS. WE WILL MAKE ADJUSTMENTS WHERE
POSSIBLE IN THE CIRCUMSTANCE, HOWEVER OUR SESSION LEADERS RESERVE
THE RIGHT TO REFUSE A SPACE TO A CHILD IF THEY FEEL THAT THEY CANNOT
SUPPORT THE CHILD'S NEEDS PROPERLY.

IF WE CAN OFFER YOUR CHILD A PLACE, A REGISTRATION FEE OF £40 WILL BE
NEEDED TO SECURE IT. A TRIAL PERIOD OF 4 WEEKS WILL THEN COMMENCE. IF
BOTH THE CHILD, THE PARENTS/CARERS AND SESSION LEADERS ARE HAPPY
WITH HOW THE TRIAL WENT, A MONTHLY PAYMENT SCHEDULE WILL BE SET UP
AND 4 WEEKS NOTICE WILL BE REQUIRED FROM THERE ON IF YOU WANT TO
LEAVE. OUR SESSION PRACTITIONERS ARE AVAILABLE TO GIVE FEEDBACK AT
DROP OFF OR PICK UP EACH WEEK.

IF YOU HAVE ANY QUESTIONS OR WOULD LIKE TO ARRANGE A VISIT TO ONE
OF OUR SESSIONS, DO NOT HESITATE TO GET IN TOUCH.



A dramatic landscape photograph with a blue sky, white clouds, and dark silhouettes of trees and mountains. The text is overlaid in white, bold, sans-serif font.

"IF WE WANT OUR
CHILDREN TO MOVE
MOUNTAINS, WE
FIRST HAVE TO LET
THEM GET OUT OF
THEIR CHAIRS."

NICOLETTE SOWDER

10 OUR OTHER SERVICES

MANY OF OUR OUTDOOR ADVENTURERS ALSO ATTEND OUR NEW SESSIONS AT EMBERS LEARNING COMMUNITY AS THEY COMPLEMENT EACH OTHER WELL. EMBERS IS A PROJECT BASED, JOY CENTRED LEARNING COMMUNITY FOR HOME EDUCATING CHILDREN AGED 5-13 YEARS OLD.

SESSIONS AT EMBERS ARE A LITTLE MORE STRUCTURED, PREDOMINATELY INDOORS AND PROVIDE OPPORTUNITIES AND EXPERIENCES FOR CHILDREN TO COLLABORATE ON PROJECTS.



HERE AT THE OUTDOOR LEARNING COMPANY WE ARE LUCKY ENOUGH TO RUN TWO FOREST PRE-SCHOOLS FOR UNDER 5S. INSPIRED BY THE FOREST SCHOOL APPROACH TO LEARNING, YOUR CHILD WILL HAVE A UNIQUE EXPERIENCE BEING IMMERSSED IN NATURE, USING TOOLS AND EXPLORING THE WOODLAND THROUGHOUT THE SEASONS.

WE ALSO HAVE OUTDOOR ADVENTURERS FOREST SCHOOL HOLIDAY CLUBS IN VARIOUS LOCATIONS FOR THE OVER 5S. WE CAN ALSO HOST A FOREST SCHOOL BIRTHDAY PARTY AT OUR HINTON PRESCHOOL VENUE.

FOR MORE INFORMATION ON ANY OF OUR SERVICES PLEASE VISIT
WWW.THEOUTDOORLEARNINGCOMPANY.CO.UK





WWW.THEOUTDOORLEARNINGCOMPANY.CO.UK